

# MILTON

---

## KEY FIGURES & FACTS

- Neighbouring the Brisbane CBD, Milton is one of Brisbane's most established suburbs
- Boasting Brisbane's first outdoor café strip on Park Road, Petrie Terrace, and a new wave of modern dining and shopping
- It is surrounded by an abundance of green space and bikeways and is considered one of Brisbane's best connected suburbs
- Residents of this property will access expansive views of the Brisbane CBD, Brisbane River and Mount Coo-tha
- Residents will enjoy the proximity to key entertainment precincts such as Suncorp Stadium, The Barracks, Park Road, West End and Petrie Terrace in Paddington



# THE LOCATION

**Milton offers great lifestyle amenity with a number of entertainment and cultural facilities close to the site, including the Park Road Retail and dining Precinct, Rosalie Village, The Barracks at Petrie Terrace, Caxton Street entertainment precinct and the Brisbane CBD.**

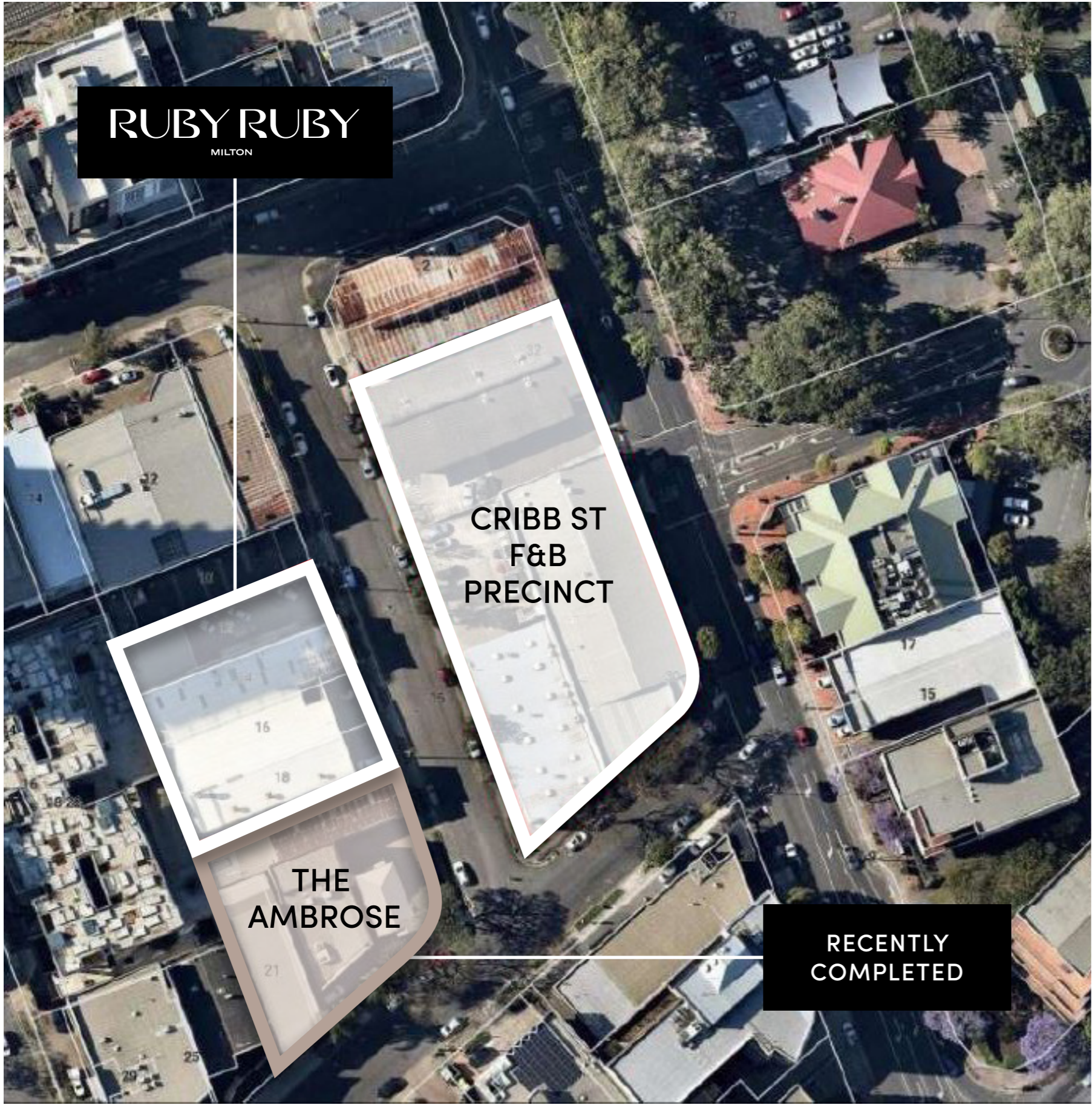
A number of high class educational facilities are a short train, bus, ferry or drive to Crombie Street, Milton. The University of Queensland sits on the waterfront in the eastern riverside pocket of St Lucia and is a globally recognised teaching and research institution.

The immediate surrounds include a number of popular parks and playgrounds including Frew Park, Milton Park, Perrin Park, Banksia Park, Robertson's Park, Jack Speare Park and Guyatt Park on the waterfront.

The development is planned to be a vibrant destination, with a mix of uses including:

141 apartment residences with expansive views of the Brisbane CBD, Brisbane River and Mount Coo-tha.





**RUBY RUBY**  
MILTON

**CRIBB ST  
F&B  
PRECINCT**

**THE  
AMBROSE**

**RECENTLY  
COMPLETED**

# CRIBB ST PRECINCT

- Located at 32-40 Cribb Street, Milton, the site opposite the Crombie Street development
- The proposed development will transform industrial buildings into a low rise food and beverage precinct
- The precinct will include a microbrewery, craft distillery, food hall (including a series of 'micro-restaurants'), restaurant and rooftop bar, all situated around landscaped terrace dining
- It's expected the precinct will rejuvenate the area and support future residential development

# CRIBB STREET FOOD & BEVERAGE PRECINCT

The Milton neighborhood is the perfect place to meet: a bubbling hub full of food, drink and entertainment, right at your doorstep.

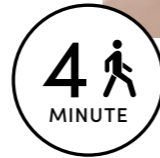


# THE LOCATION



## MILTON TRAIN STATION

A four minute walk from Crombie St, Milton Station hosts frequent train services that connect you with the city and surrounds.



## PARK ROAD PRECINCT

With its European allure, Milton's iconic Park Road Precinct enjoys an abundance of lively cafe culture and alfresco dining.



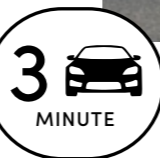
## MILTON FERRY TERMINAL

Whether you're heading to the CBD, The University of Queensland, or beyond, the CityCat ferry is your traffic-free option.



## SUNCORP STADIUM

As the beating heart of Brisbane's sporting scene, the world-class Suncorp Stadium is home to rugby league, rugby union and major events.



## FREW PARK

Enjoy a game of tennis at the Roy Emerson Tennis Centre or a lazy weekend picnic in the parklands with a wealth of play spaces for kids.



## BRISBANE CBD

Work or play, Brisbane's CBD is located just 2kms from Crombie St, ensuring you are in prime position to enjoy its bounty.

# THE LOCATION



5  
MINUTE

## BRISBANE GRAMMAR

With an enviable reputation and heritage charm, Brisbane Grammar School is one of many of elite educational offerings near Crombie St.



7  
MINUTE

## PADDINGTON PRECINCT

Neighbouring Paddington offers vibrant cafes, vintage fashion and antique shopping set amongst a picturesque village atmosphere.



10  
MINUTE

## SOUTH BANK

Brisbane's cultural, educational and recreational precinct features a host of events alongside galleries, museums, Streets Beach and parklands.



10  
MINUTE

## MT COOT-THA GARDENS

Recognised as Queensland's premier subtropical botanic gardens, this 56-hectare lush sanctuary provides the ultimate escape just moments away.



12  
MINUTE

## MT COOT-THA LOOKOUT

Walk, run, bike or drive it. The spectacular panoramic views across Brisbane are worth the climb at Mount Coot-tha Lookout.



14  
MINUTE

## UNIVERSITY OF QLD

Ranked in the top 50 QS World University Rankings, The University of QLD is one of the world's most respected universities.